

SCALE
1/48
USAAF P-51B
"BLUE NOSE"

70th
ANNIVERSARY
1944-2014

12303

ACURATE
MANUALS

ACADEMY

HOBBY MODEL KITS

NOTICE

- 미육군 항공대 제8항공단 352전투항공군 486전투비행대 소속 기체 (1944년 6월 영국 노포크 지방 보드니 주둔지)
- 486th FS, 352nd FG, 8th U.S. Army Air Force. Bodney, Norfolk, UK - June 1944



	Humbrol		GSI Crees		Lifecolor		TESTORS / MODELMASTER		Revell		Vallejo		
	ENAMEL	MC. COLOR	ACQUOUS HOBBY COLOR	MC. COLOR	ENAMEL	ACRYL	ENAMEL	ACRYL	MODEL COLOR	MODEL AIR			
▼ FINE CHROMATE TYPE I (2000)	151		H58	27	UA004	1715	4735			833	10	흰색 (오프 화이트)	
▼ FLAT BLACK	33	33	H12	33	LC02	1749	4768	32108	34108	950	57	검정색	
▼ SILVER	11	11	H8	8	LC74	2914	4678	32190	34190	997	63	은색	
▼ STEEL	53	53	H18	28	LC76	1795	4681	32191	34191	863	72	스틸	
▼ YELLOW (1000)	166		H329	329	LC53	1767	4683	32310	34310	953	2	노란색	
▼ BRIGHT BLUE			H65	65			2032			963		파란색	
▼ OLIVE DRAB (1000)	155		H52	12	UA003	1711	4728			887	43	녹색	
▼ NEUTRAL GRAY	128	128	H53	13	UA027	1741	4761	32374	34374	905		회색	
▼ BURNT IRON			H76	61								번드 아이언	
▼ CLEAR RED	91321		H90	47			4630			934		투명 빨간색	
▼ CLEAR BLUE	91320		H93	50			4656			938		투명 파란색	

Water - Slide Decals ■ 습식 전사지 (데칼) 부착 방법

Guide for Beginners
초보자용 가이드



Cut desired part of decal sheet with scissors.
시팅할 전사지를 잘라내는 부분을 가위로 잘라냅니다.



Water (15 - 22°C)
Float the cut decal on water for 10 - 30 seconds.
따뜻한 전사지를 물에 띄워 약 10 - 30초 동안 불립니다.



Take out the decal sheet from water and paste it to the designate area with precision tweezers.
물에서 꺼낸 전사지를 부러 부러의 정밀 핀셋을 사용해 부착합니다.



Remove water or air on the surface of decal sheet with cotton swab.
넉넉한 물기는 후시 혹은 면봉을 이용해서 제거합니다. 크기가 큰 전사지를 물기는 면봉을 항상 양방향으로 슬라이스 제거하면 쉽게 제거할 수 있습니다.



CAUTION!

-주의-

◀READ THIS BEFORE YOU BEGIN▶
 ◀ALLGEMEINE HINWEISE▶
 ◀LISEZ CE QUI SUIT AVANT DE COMMENCER LE MONTAGE▶
 ◀組み立てる前に▶
 ◀대부분의 면에 대해 읽어야 함▶

◀LISEZ CE QUI SUIT AVANT DE COMMENCER LE MONTAGE▶

- Étaler les schémas d'assemblage. - Controler que chaque pièce soit bien conforme avant de la coller à sa place.
 - Vérifier pas trop de colle pour remplir les pièces. - Ne jamais marquer la colle ou peindre à proximité d'une flamme.
 - Aérer soigneusement la pièce si vous peignez (éviter la fumée).
 - Après avoir sorti les pièces du sac en plastique, débrancher le sac afin d'éviter que les enfants ne le mettent sur la tête et ne s'étouffent.

◀組み立てる前に▶

組み立てる前に説明書をお読み下さい。- 部品はコンパウンドから取り出す前に必ず型紙にコピーしたカラーを参照し、必ず型紙に当てはまるように正確に位置合わせの上で行ってください。- 塗装する前に顔面を十分に乾燥させてください。
 塗料が顔面に付く恐れがありますので必ず換気扇を回して換気をよくして下さい。
 組み立て後は必ず子供が遊ぶ場所から取り出し子供の手が届かない場所に保管して下さい。

◀조립하기 전에▶

-부품을 조립하기 전에 설명서를 잘 읽어본 후 조립한다.
 -접착제나 칠이 부품을 맞추어 확인한 후 조립한다.
 -부품을 자를 때에는 절이나 나뭇잎의 재질이 절여진다.
 -접착제를 사용할 곳과 사용하지 않는 곳에 주의하여 너무 많이 바르지 않도록 한다.
 -화상 등 어린이나 접착제를 사용할 때는 환기를 잘 하고 화기를 멀리한다.
 -사용 후 남은 부품을 어린 아이들이 손에 닿지 않도록 잘 처리한다.

◀READ THIS BEFORE YOU BEGIN▶

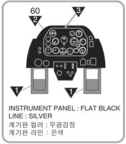
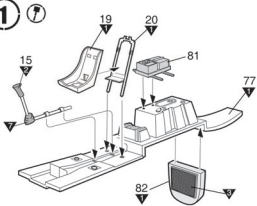
- Study the instructions before assembling. - Check the fit of each piece before cementing into place.
 - Do not use too much cement to join parts. - Never use cement or paint near open flame.
 - Open a window or make area well ventilated when cement or paint is in use.
 - Tear up and throw away the empty plastic bags to avoid danger of suffocation for little children.

◀ALLGEMEINE HINWEISE▶

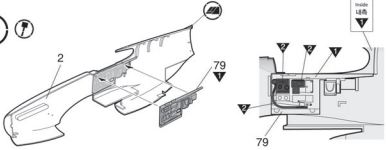
- Die Anordnung der Bauteile ist aus den Zeichnungen der Anleitung ersichtlich.
 - Die Teile vor dem Kleben sorgfältig zusammenhalten, um ihren passgenau zu prüfen.
 - Klebstoff nicht zu dick auftragen. - Klebstoff und Farben niemals in der Nähe einer Flamme verwenden.
 - Während der Bemalung mit Spritzpistole oder Pinsel für frische Luftzufuhr, z.B. Stöhen des Fensters, sorgen.
 - Bausatz von Kleinen Kindern fernhalten. Verhüten Sie, daß Kinder irgendwelche Bauteile in den Mund nehmen oder Plastikbeut über den Kopf ziehen.

접착제 사용 Cement paste Coller Kleben	안면부에 접착제 사용 금지 Do not cement face 안면부에 접착제 사용 금지	반복 작업 Repeat operation Repetir / repetition Wiederholung	DECAL Stickers Décalcomanie Aufkleber Sticker	무거운 물체 추가 Add weight ajouter Zusatz	필터 사용 Use filter utiliser Schleier
잘라내기 Cut away Couper Schneiden	선택 부품 Optional parts Optionale Ausstattungsgegenstände	수리 작업 Repair for separate side Réparation de la cage Wiederholung für gegenüberliegende Seite	구멍 뚫기 Make hole faire un trou Öffnen	화상 주의 Be careful faire attention Hitze vermeiden	부품 번호 확인 Parting (checking) number Numéro de la robe de peinture Lebenszeichennummer

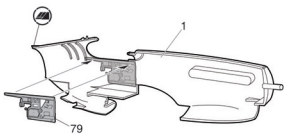
1



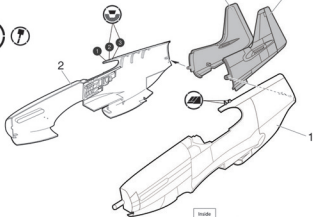
2



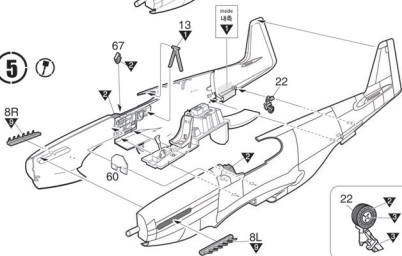
3 



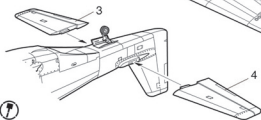
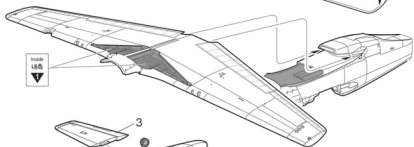
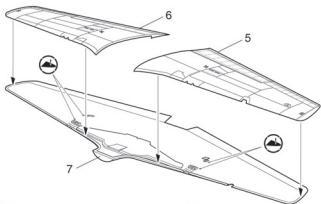
4 



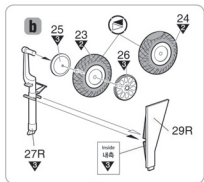
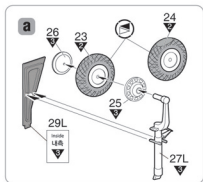
5 



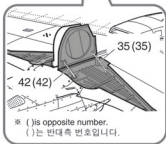
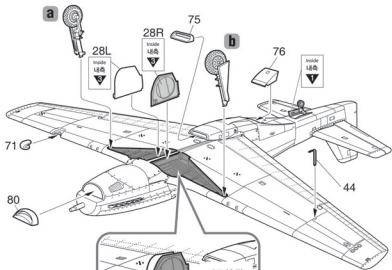
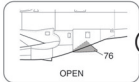
6 7



7 7



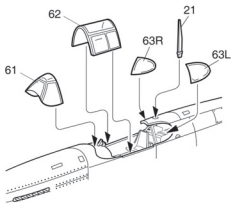
8 



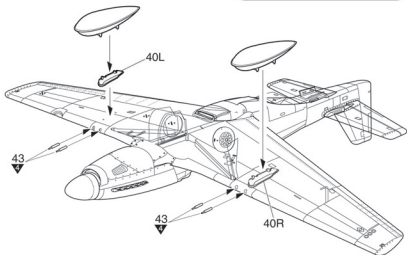
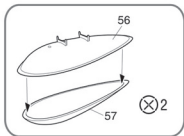
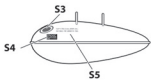
9



10 

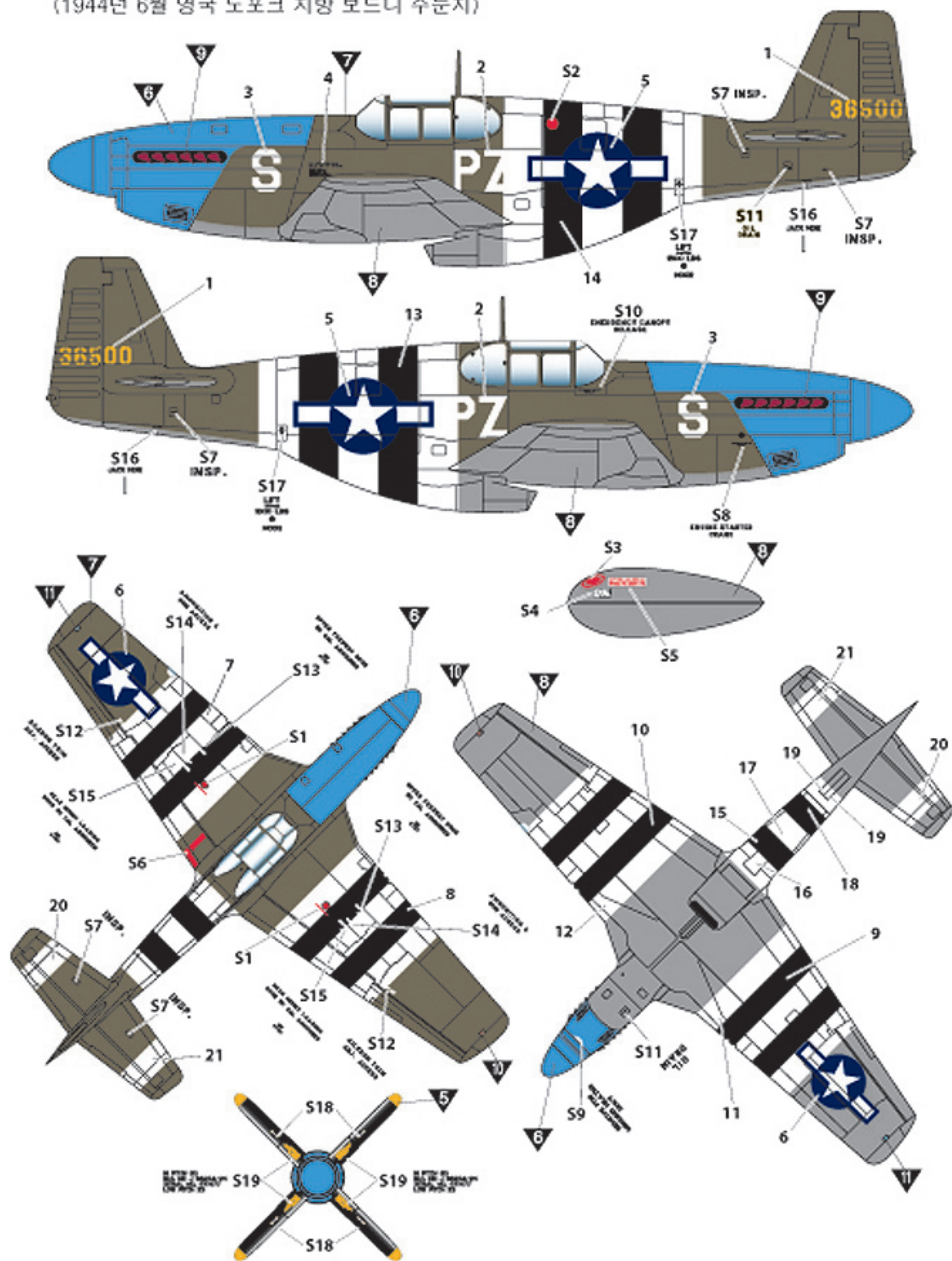


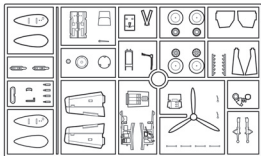
11 



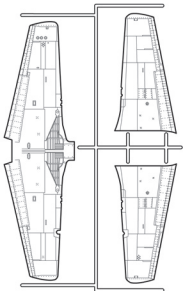
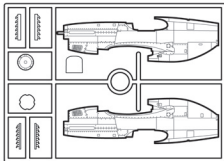
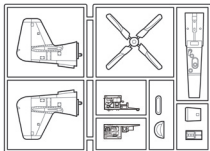
1 USAAF P-51B 486th FS, 352nd FG, 8th U.S. Army Air Force.
Bodney, Norfolk, UK, June 1944

P-51B 미육군 항공대 제8항공단 352전투항공군 486전투비행대 소속 기체
(1944년 6월 영국 노포크 지방 보드니 주둔지)





8번도 수정중입니다.
완성파일을 이따 드릴게요



• Decal / 전사지

• Unused parts / 불필요 부품
9, 11, 11L, 11R, 14, 16,
17, 18, 30, 31, 32, 33 x 2
41, 61, 64, 65, 66, 70