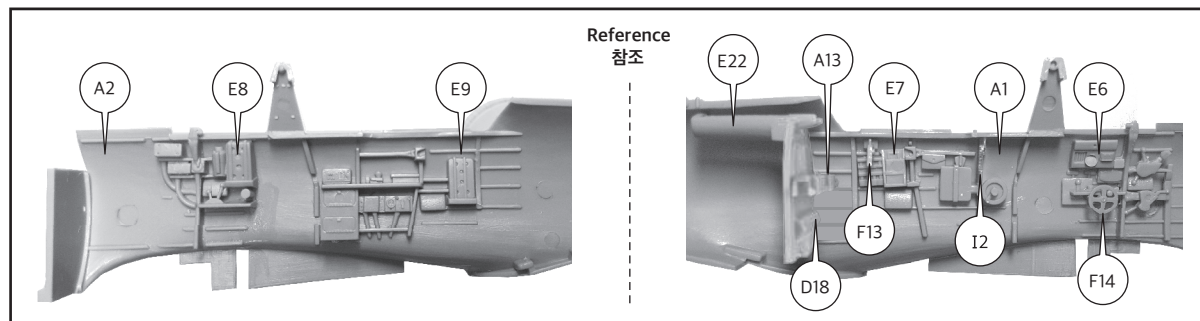
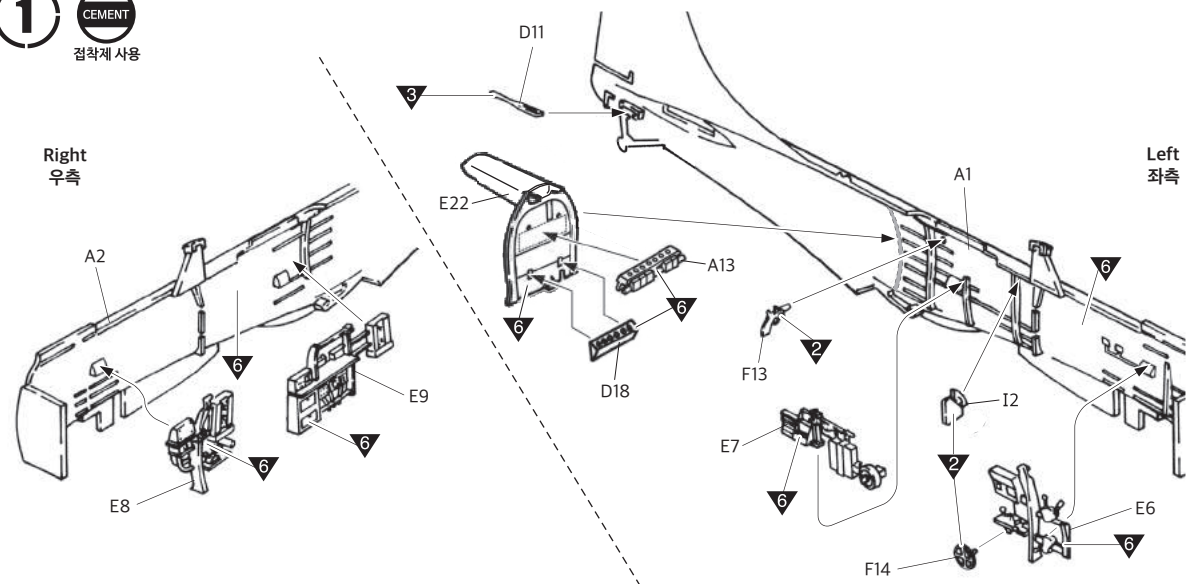


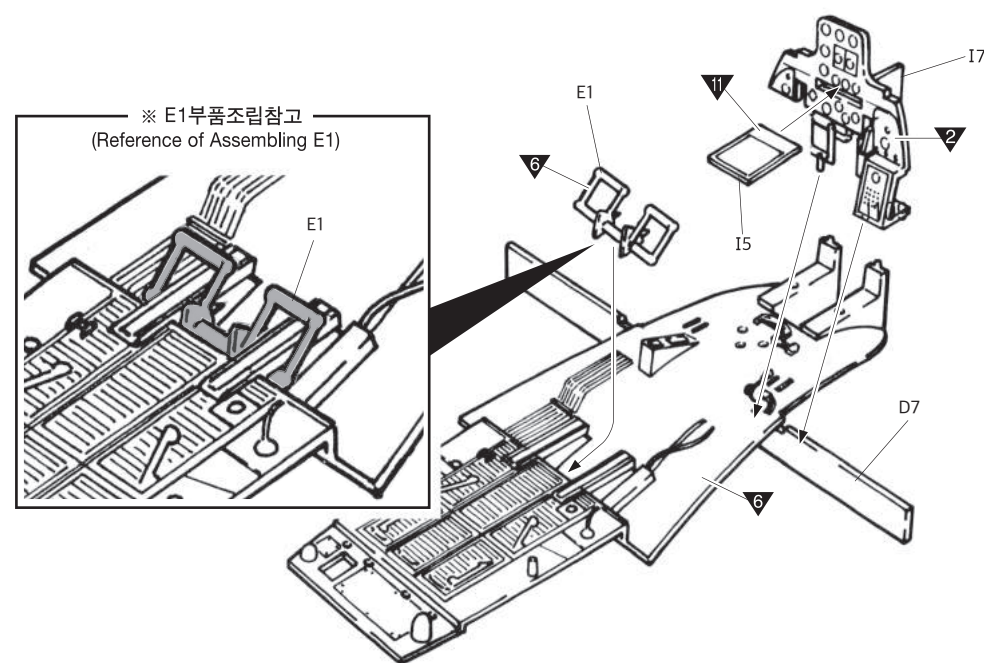
MANUAL 1

12335 1/48th USN SBD-2 'Battle of Midway'

1 CEMENT 점착제 사용

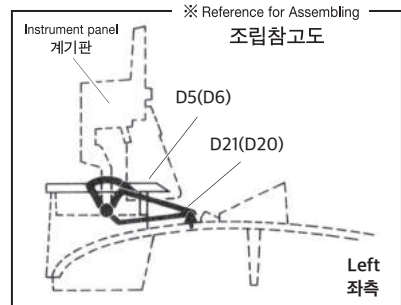


2 CEMENT 점착제 사용

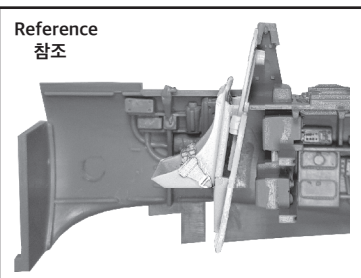
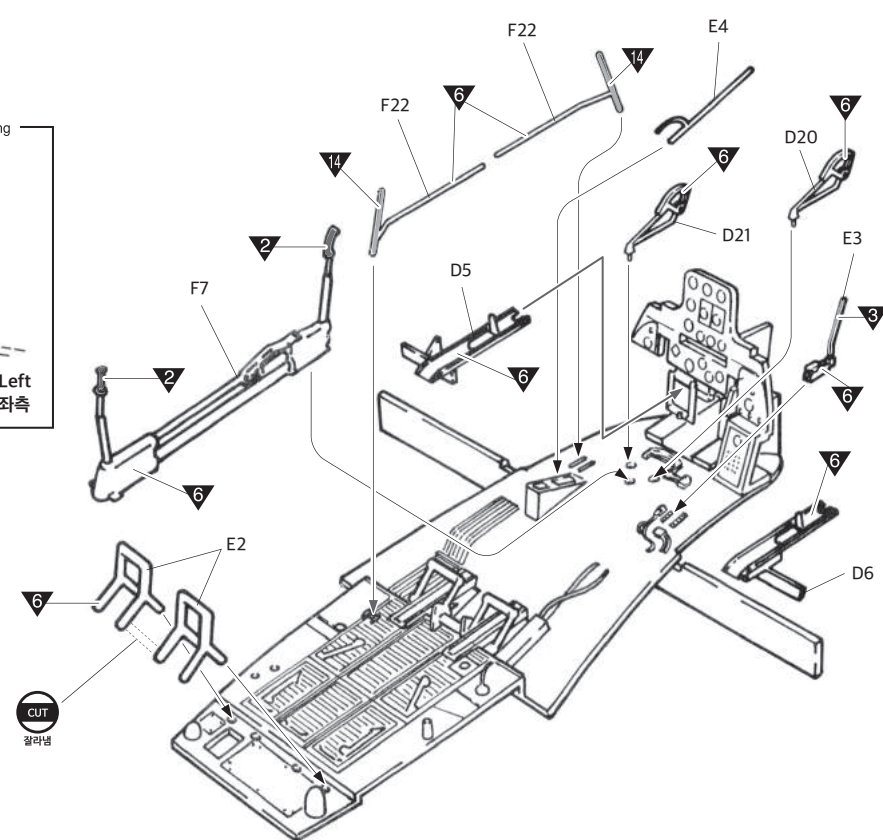


2

3 CEMENT 점착제 사용

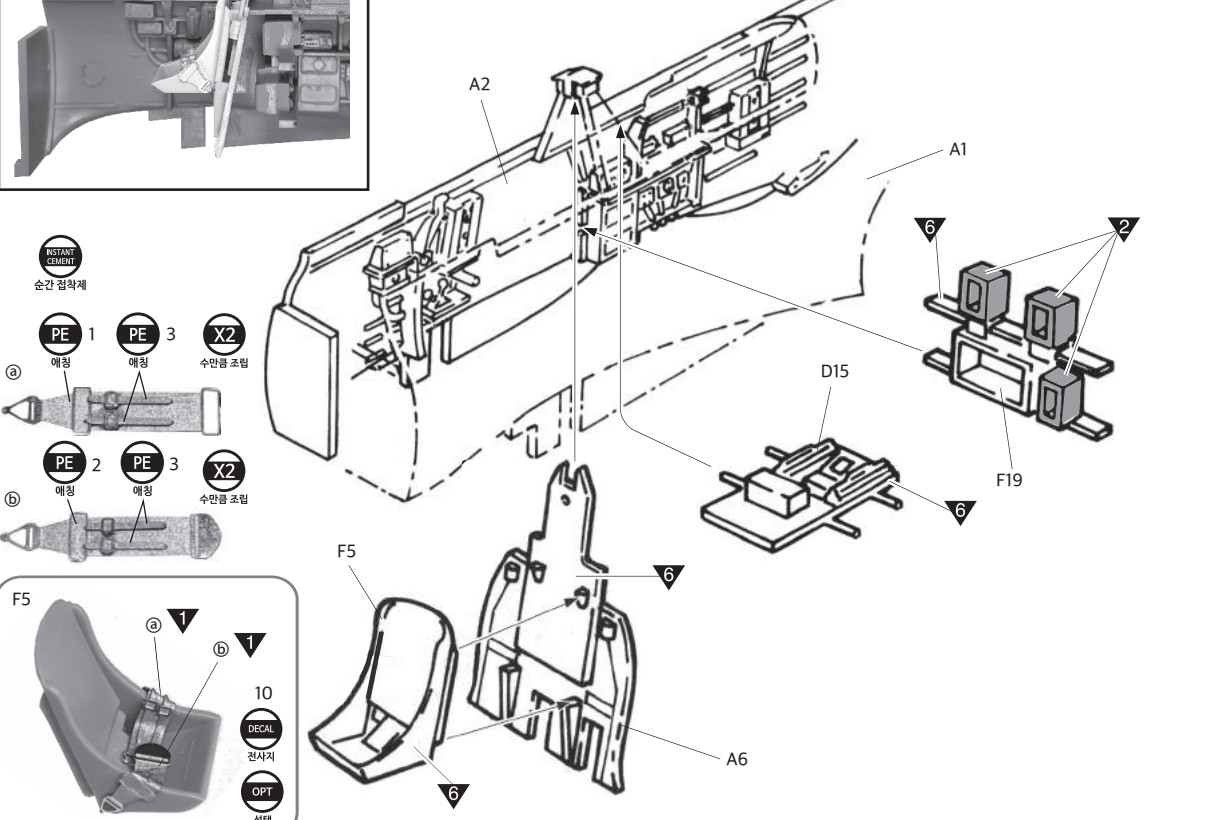


※ () is opposite number.
() 는 반대측 번호입니다.



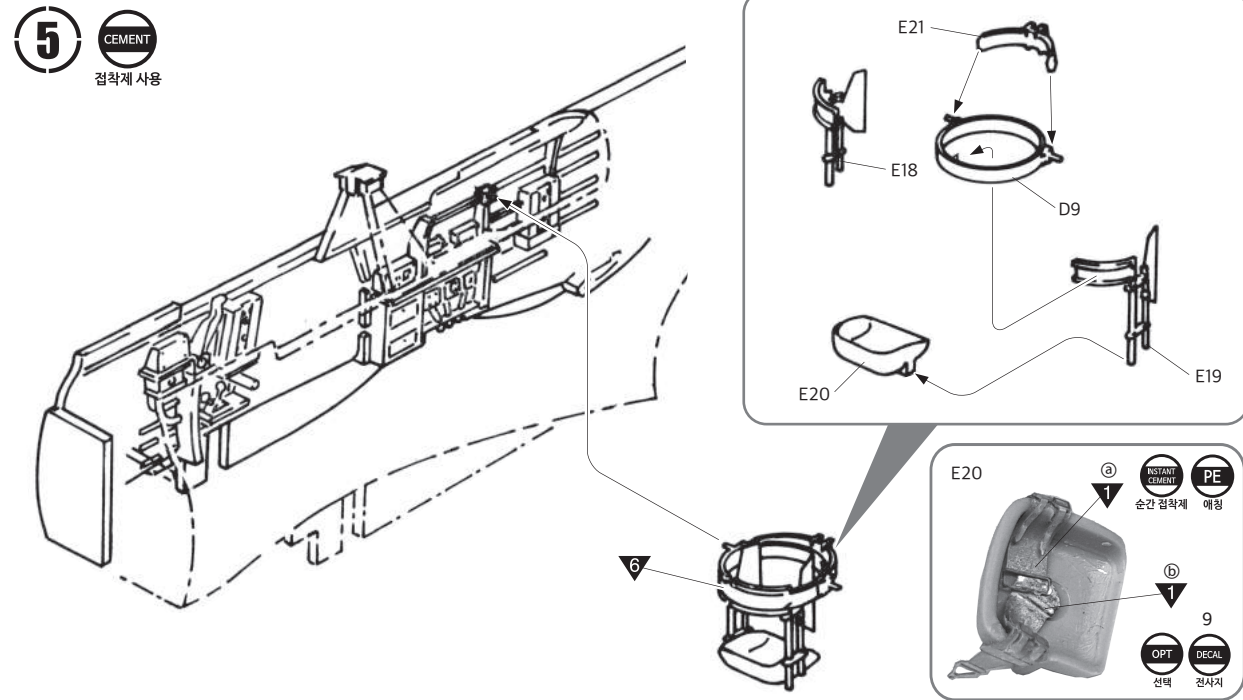
※Please, assemble A6, D15, F19 parts, after glue fuselage (A1, A2)
A6, D15, F19부분은 동체 (A1, A2)를 먼저 조립후 그림과 같이 부착하세요.

4 CEMENT 점착제 사용

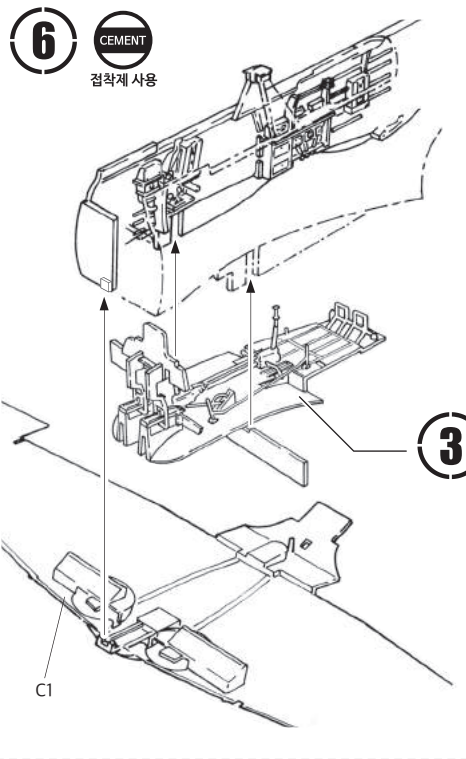


3

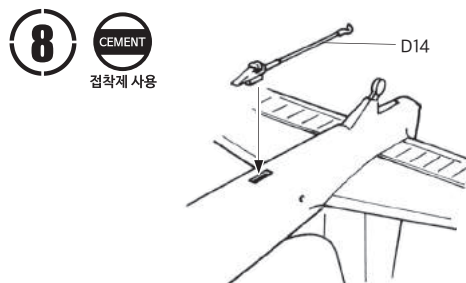
5 CEMENT 점착제 사용



6 CEMENT 점착제 사용

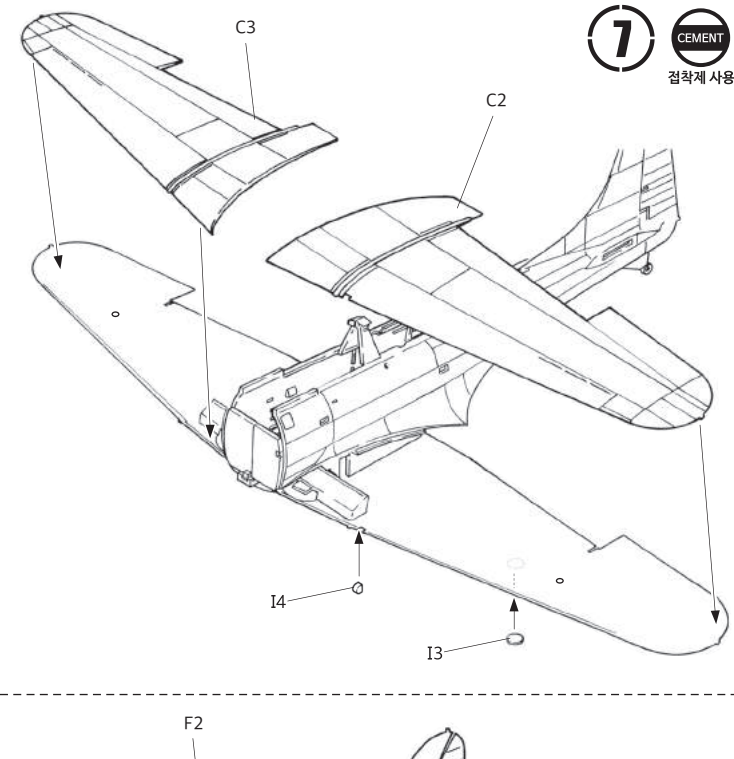


8 CEMENT 점착제 사용

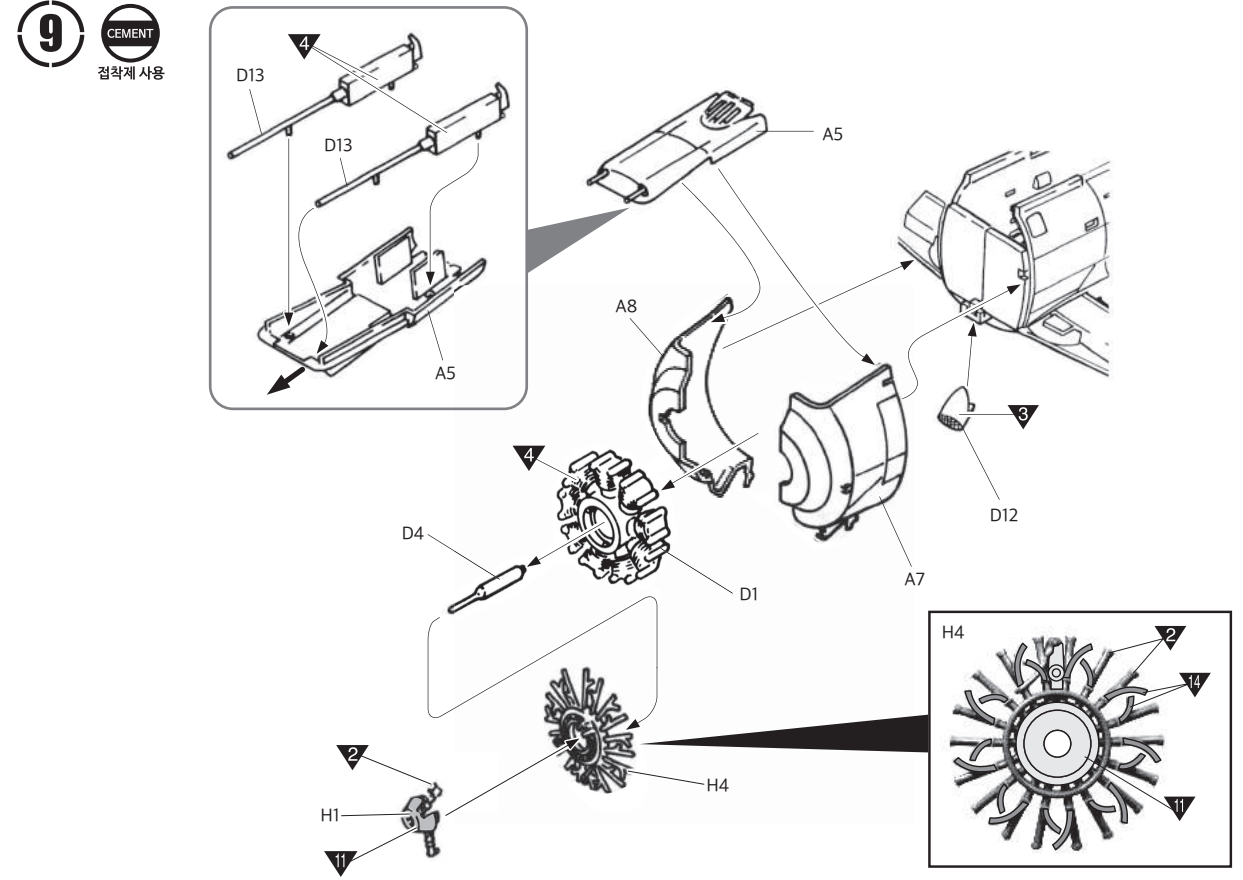


4

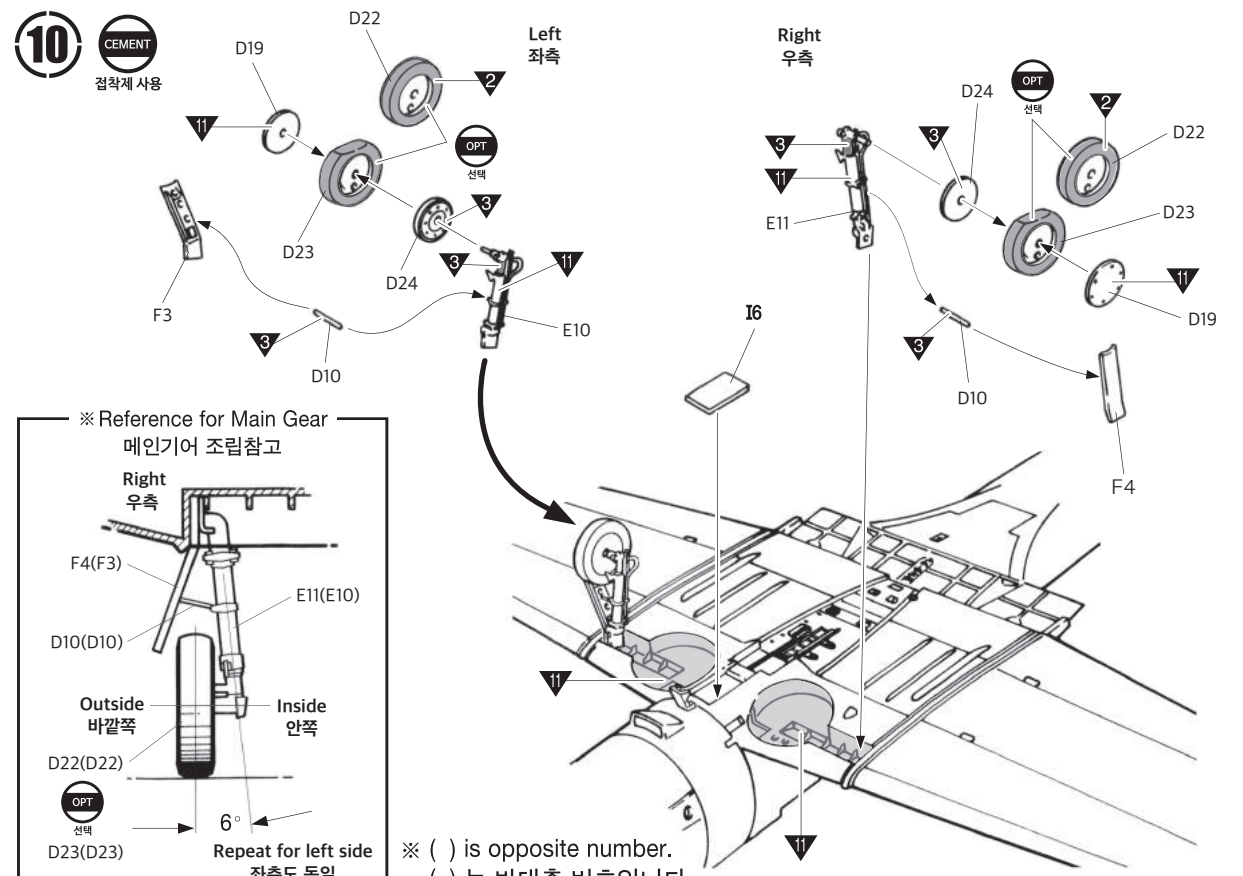
7 CEMENT 점착제 사용



9 CEMENT 점착제 사용



10 CEMENT 점착제 사용



※ () is opposite number.
() 는 반대측 번호입니다.

5

11

CEMENT

점착제 사용

<1000 lbs Bomb>

F8

F9

F10

F11

D8

E12

F21(F21)

※ () is opposite number.
() 는 반대측 번호입니다.

<100 lbs Bomb>

F17(F18)

F15(F16)

※ Painting Guide
무장도색참고

<100 lbs Bomb>

15

<1000 lbs Bomb>

3

DECAL 56

DECAL 57

11

CEMENT

점착제 사용

<1000 lbs Bomb>

F8

F9

F10

F11

D8

E12

F21(F21)

※ () is opposite number.
() 는 반대측 번호입니다.

<100 lbs Bomb>

F17(F18)

F15(F16)

※ Painting Guide
무장도색참고

<100 lbs Bomb>

15

<1000 lbs Bomb>

3

DECAL 56

DECAL 57

12

CEMENT

점착제 사용

Reference
참조

When assembling with closed, do not assemble F23, E13, F6 part.
닫힌 상태로 조립할 때에는 F23, E13, F6은 조립하지 않습니다.

F23

E13

F6

Closed/ 닫힘

Open/ 열림

Full open/ 전체 열림

12

CEMENT

점착제 사용

Reference
참조

When assembling with closed, do not assemble F23, E13, F6 part.
닫힌 상태로 조립할 때에는 F23, E13, F6은 조립하지 않습니다.

F23

E13

F6

Closed/ 닫힘

Open/ 열림

Full open/ 전체 열림

13

CEMENT

점착제 사용

※ () is opposite number.
() 는 반대측 번호입니다.

E5

Inside
내측

E13

Inside
내측

F23(F6)

E16(E17)

E14(E15)

Inside
내측

13

CEMENT

점착제 사용

A9

A4

A3

D3

H3

D2

A10

F20

H2

D16(D16)

F12

※ () is opposite number.
() 는 반대측 번호입니다.

A9

A4

A3

14

CEMENT

점착제 사용

Before painting, apply masking tape to indicated parts. Be sure to remove masking tape after painting.
색칠 전에 지정된 위치에 마스킹 테이프를 붙이고 색칠 후에 떼어주세요.

Masking Tape
마스킹 테이프

19

I11

I10

I18

I14

Canopy parts
캐노피 부품

11

19

I11

I10

I18

I14

Canopy parts
캐노피 부품

11

15

CEMENT

점착제 사용

※ () is opposite number.
() 는 반대측 번호입니다.

F20

H5

H2

D16(D16)

F12

MANUAL 1

MANUAL 2

※ Proceed to the MANUAL 2
MANUAL 2로 이어집니다.

SCALE
1/48

USN SBD-2
"Battle of Midway"

12335

ACADEMY
HOBBY MODEL KITS

※ You can download the latest version of an instruction manual for this model by visiting www.academyhobby.com, clicking the link for 'INSTRUCTION & DOWNLOAD' and entering the item number.
본 제품의 조립 중 궁금한 점은 www.academy.co.kr 접속 후 메뉴 '자료실' → '프라모델' 로 이동하여 해당 제품명을 입력하면 최신의 설명서를 확인 할 수 있습니다.

Warning in Assembly of Model Kits
조립전의 주의사항

Take care not to injure yourself while using the modeling tools to cut or trim parts.
공구를 이용하여 부품을 다듬고 자를 경우 손을 다치지 않도록 주의를 기울여 주십시오

CAUTION!
-주의-

<Read this before you begin>
-Study the instructions before assembling.
-Check the fit of each piece before cementing into place.
-Never use cement or paint near open flame.
-Do not use too much cement to join parts.
-Open a window or make area well ventilated when cement or paint is in use.
-Tear up and throw away the empty plastic bags to avoid danger of suffocation for little children.

<조립하기 전에>
-부품을 조립하기 전에 설명서를 잘 읽어본 후 조립한다.
-점착제 사용 시 부품에 묻어 확인한 후 조립한다.
-부품을 자를 때에는 날이나 니퍼로 깨끗이 잘라준다.
-점착제를 사용할 곳과 사용하지 않는 곳에 주의하고 너무 많이 바르지 않도록 한다.
-에나멜 페인트나 점착제를 사용할 때에는 환기를 잘 시키고 화기를 멀리한다.
-사용 후 남은 부품을 어린이의 손에 닿지 않도록 잘 처리한다.

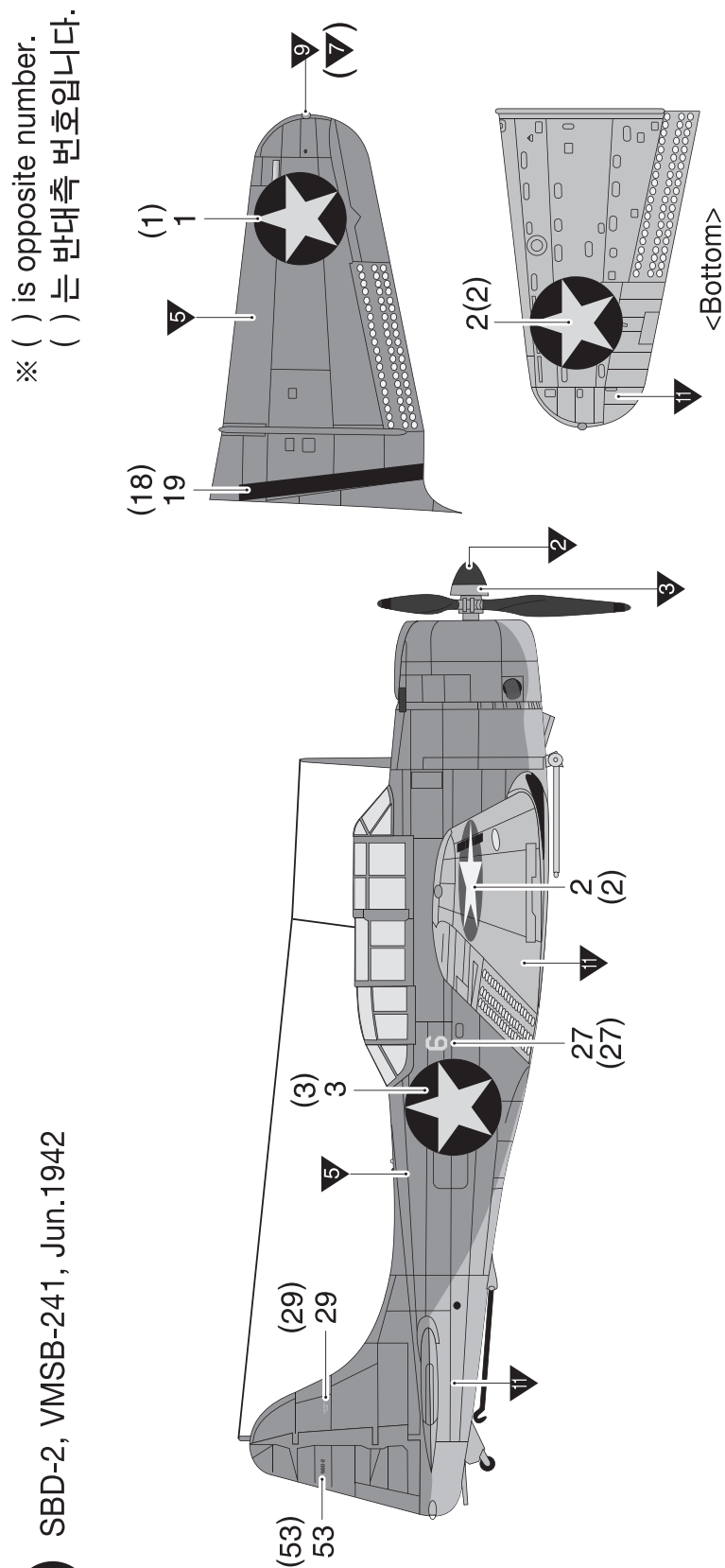
CEMENT	CEMENT	X2	DECAL	BALLAST	PE	FILL
점착제	점착제 금지	수만큼 조립	전사지	무게추	에칭	채움
CUT	OPTION	OPPOSITE	HOLE	CAUTION	INSTANT CEMENT	VER.1
잘라냄	선택	반대측 조립	뚫어줌	주의	순간 점착제	버전

		HUMBROL		GSI CREOS		TESTOR/MODEL MASTER		Revell		Vallejo		
		ENAMEL	ACRYL	AQUADES HOBBY COLOR	MR. COLOR	LIFE COLOR	ENAMEL	ACRYL	ENAMEL	ACRYL	MODEL COLOR	MODEL AIR
1	WHITE	FS17875	22	22	<H316>	316	LC51	1745	4696	32104	36104	842
2	FLAT BLACK		33	33	<H12>	33	LC02	1749	4768	32108	36108	950
3	SILVER		11	11	<H8>	8	LC74	2914	4678	32190	36190	997
4	STEEL		53	53	<H18>	28	LC76	1795	4681	32191	36191	863
5	BLUE GRAY	FS35189			<H367>	367						
6	ZINC-CHROMATE TYPE I	FS34151	151	151		351	UA004	1715	4735		833	10
7	CLEAR RED				<H90>	47		1321	4730		934	
8	CLEAR BLUE				<H93>	50			4658		938	
9	CLEAR GREEN					138						
10	CLEAR ORANGE				<H92>	49					935	
11	GRAY	FS36440	129	129	<H325>	325		1730				
12	YELLOW	FS13538	188	188	<H329>	329	LC53	1707	4683		953	
13	BLACK		21	21	<H2>	2	LC52	1742	4695			
14	RED	FS11136	19	19	<H327>	327	LC56	1503		32131	36131	957
15	OLIVE DRAB	FS34087	155		<H304>	304	UA003	1711	4728	32146	36146	887

Copyright 2020 Academy Plastic Model Co., Ltd.

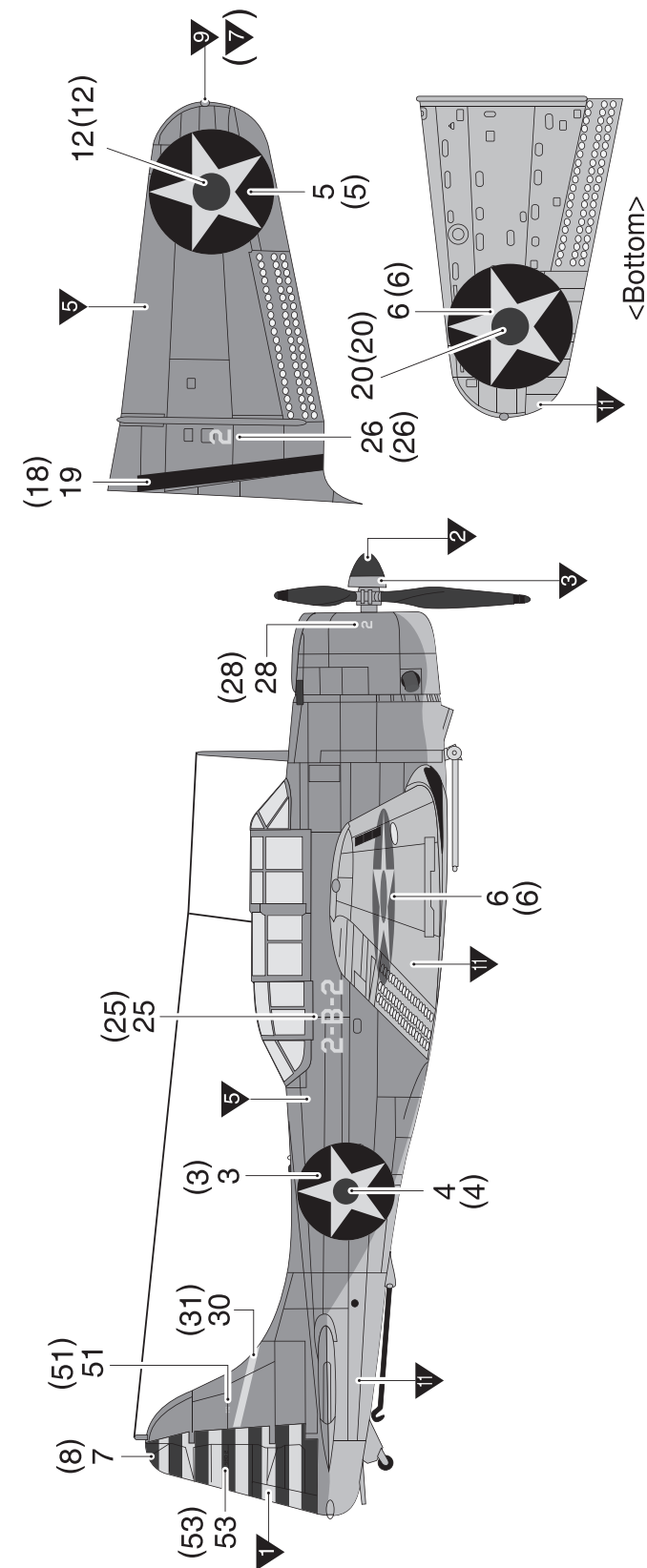
SBD-2, VMSB-241, Jun.1942

버전1
ver.1



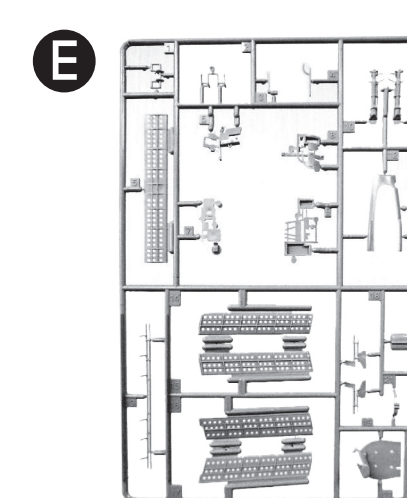
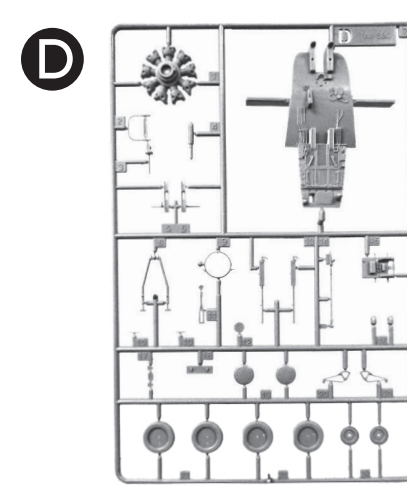
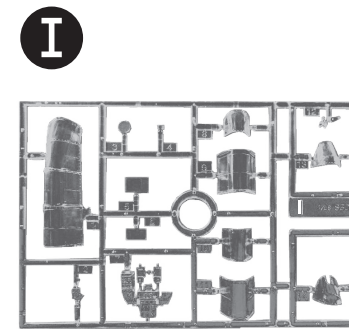
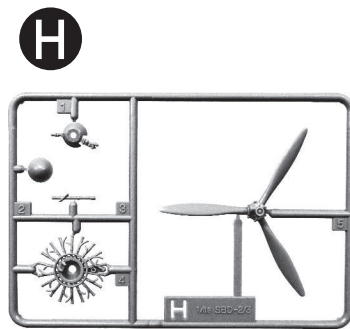
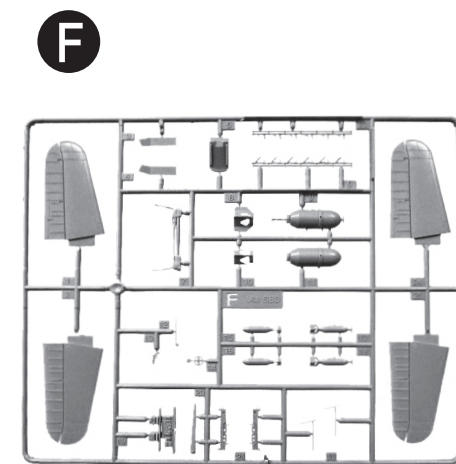
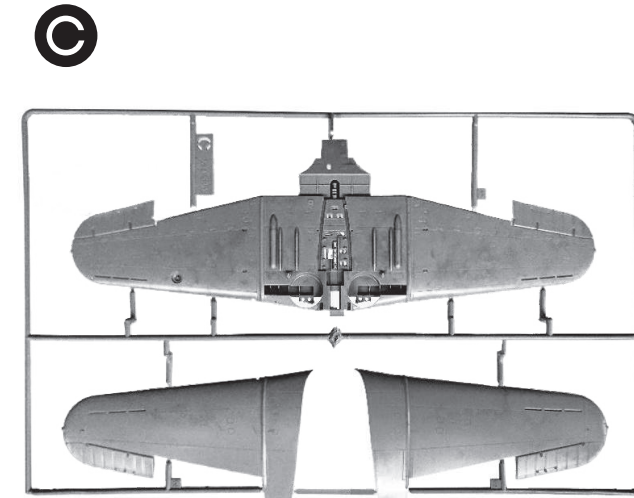
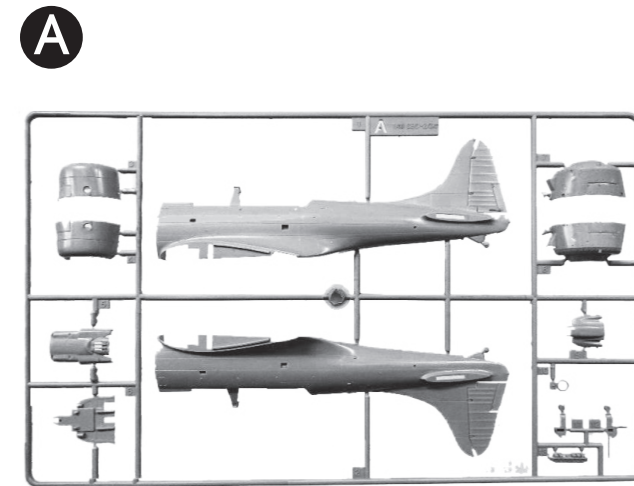
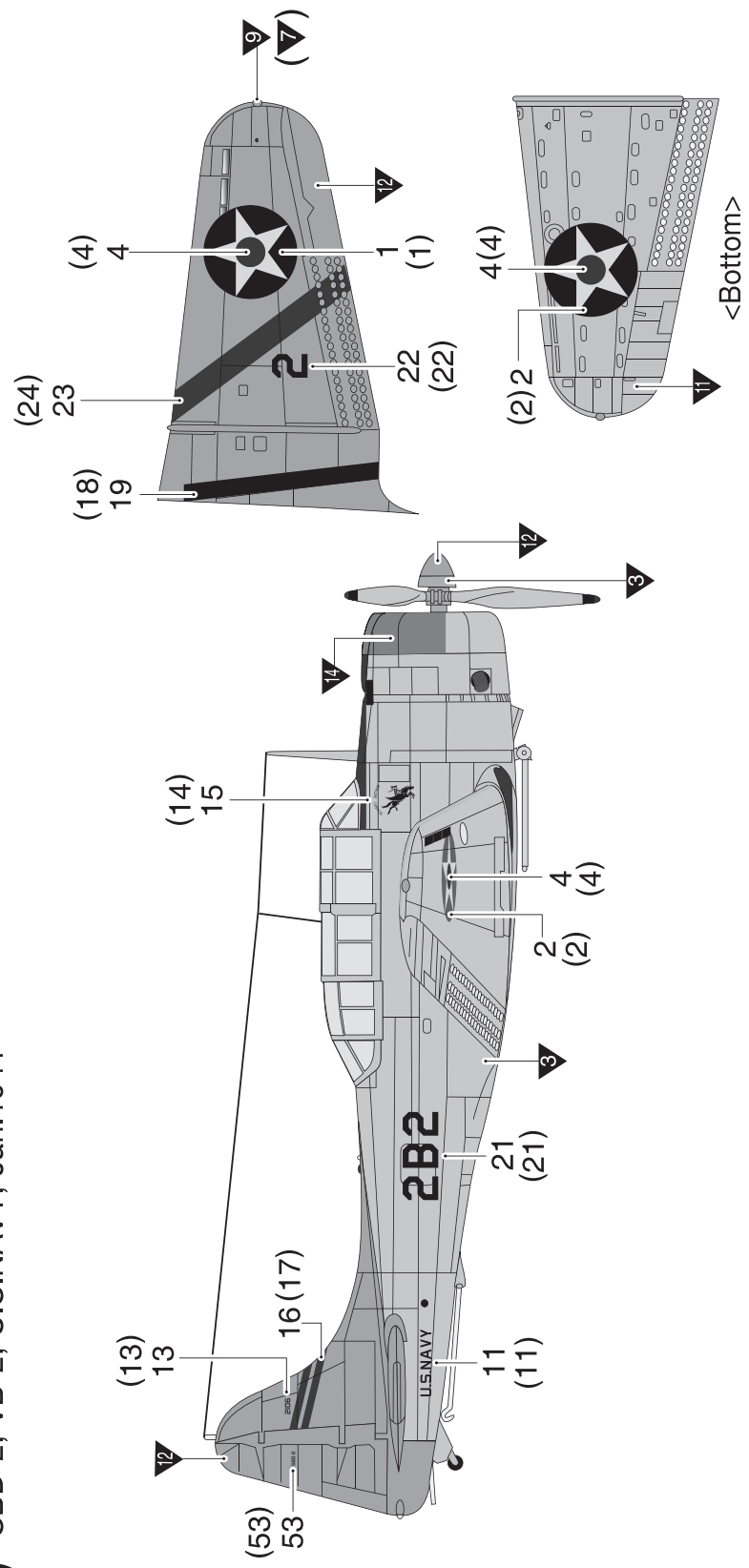
SBD-2, VB-2, "Hit and Run" Raids, Mar. 1942

버전 2



SBD-2, VB-2, U.S.NAVY, Jan.1941

버전 3



- Decal/ 전사지
- Photo Etched/ 에칭
- Masking Tape/ 마스크 테이프
- Unused parts/ 불필요 부품
D17, I12, I13

ACADEMY
HOBBY MODEL KIT

ACADEMY
ACADEMY PLASTIC MODEL CO., LTD.
고객상담문의: 031-850-850

Copyright 2020 Academy Plastic Model Co.,Ltd.

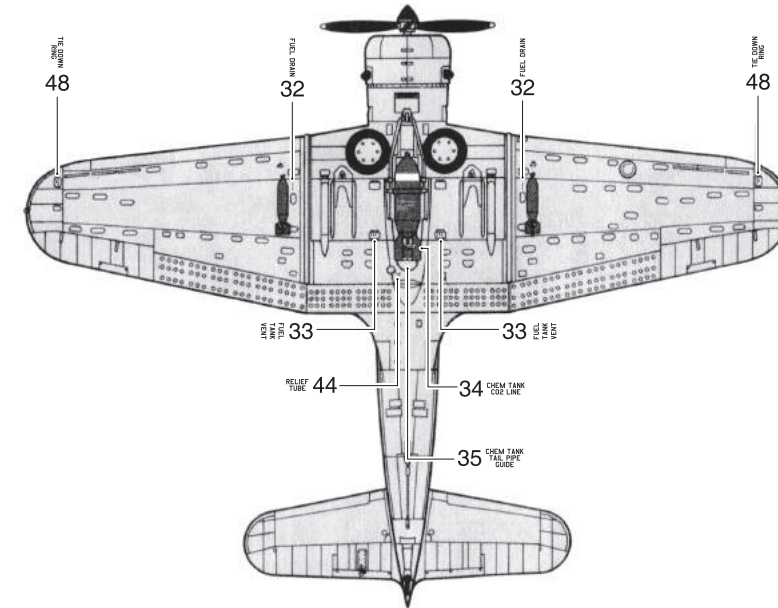
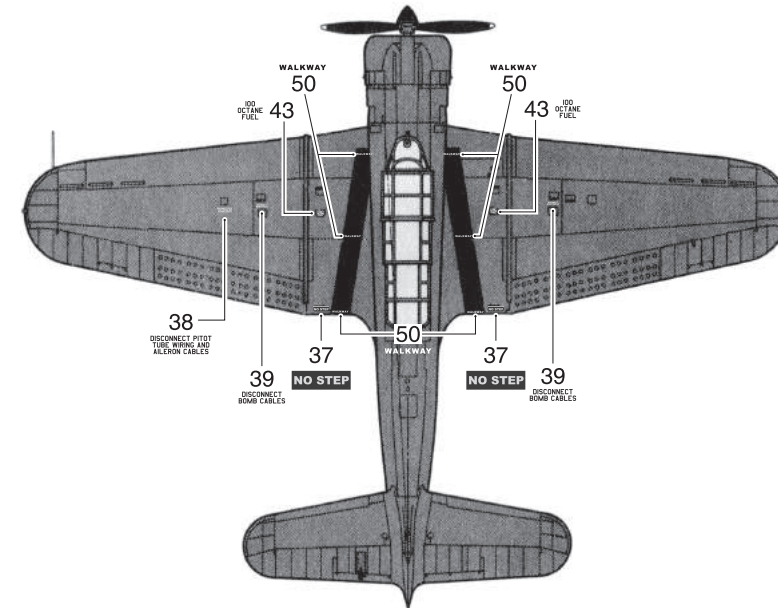
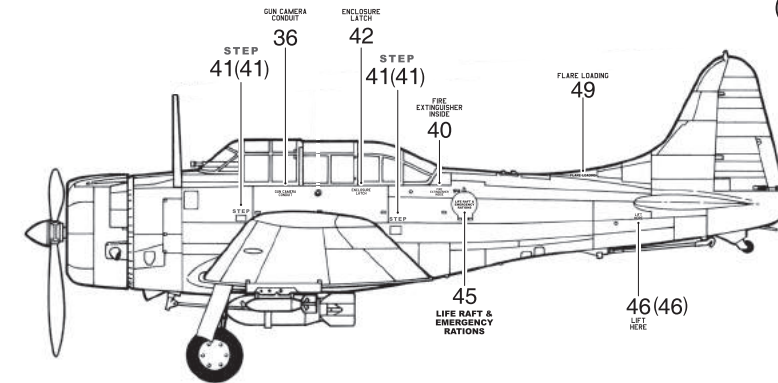
MANUAL 2

12335 1/48th USN SBD-2 'Battle of Midway'

▶ painting & decal placement/ 색칠 및 전사지붙이기

● Common Data
공통 데이터

※ () is opposite number.
()는 반대측 번호입니다.



9