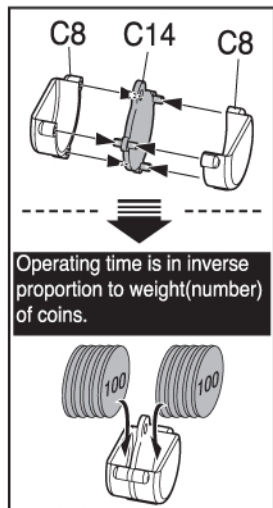
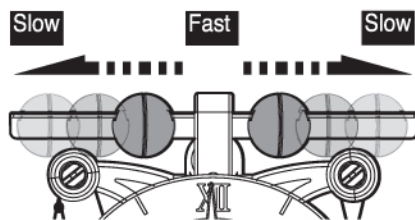
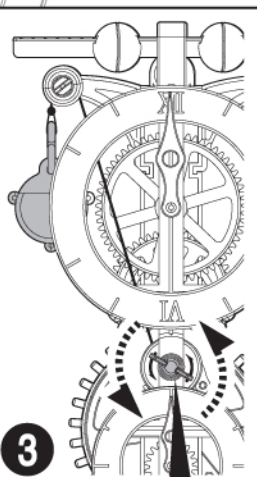


■ Method of operation → Follow numerical order to install and operate.

Control time by adjusting interval of pendulum.



Follow diagram to thread pulley.



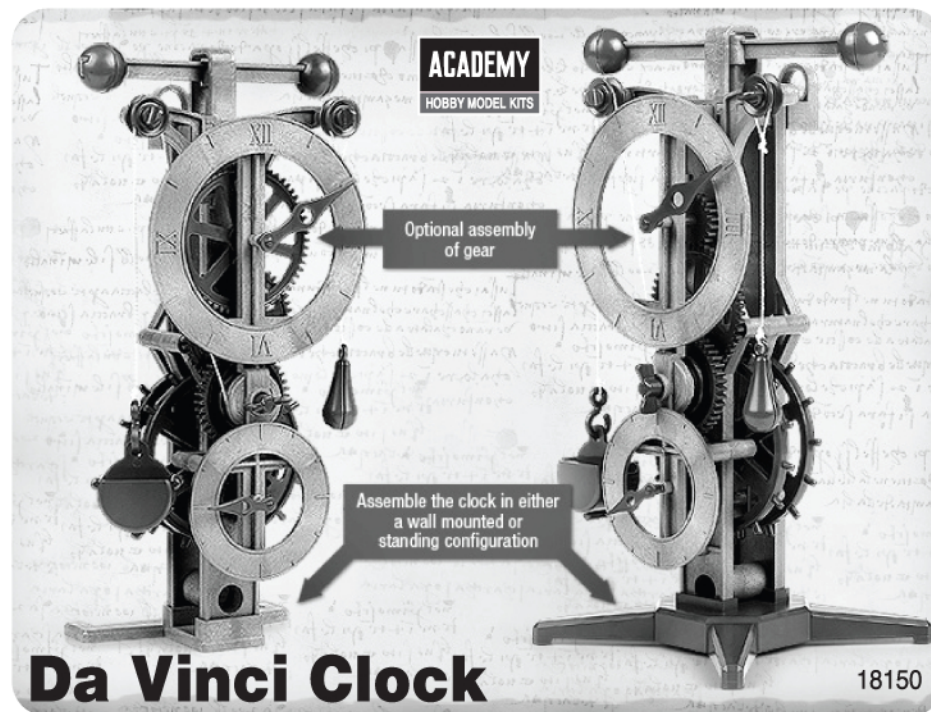
Turn lever in direction of arrow and lift weight as shown in diagram.

2

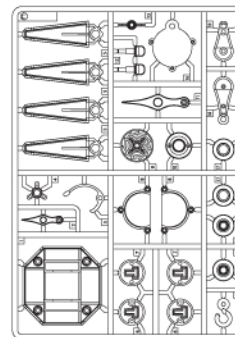
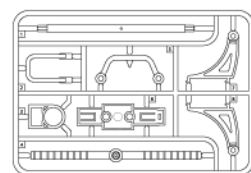
Hang assembled weight on hook.

ACADEMY
HOBBY MODEL KITS

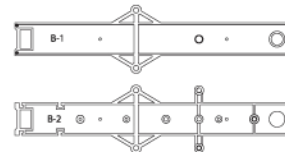
ACADEMY
ACADEMY PLASTIC MODEL CO., LTD.



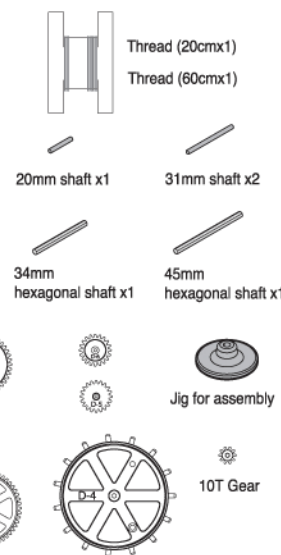
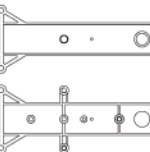
⚙️ Parts Location Diagram



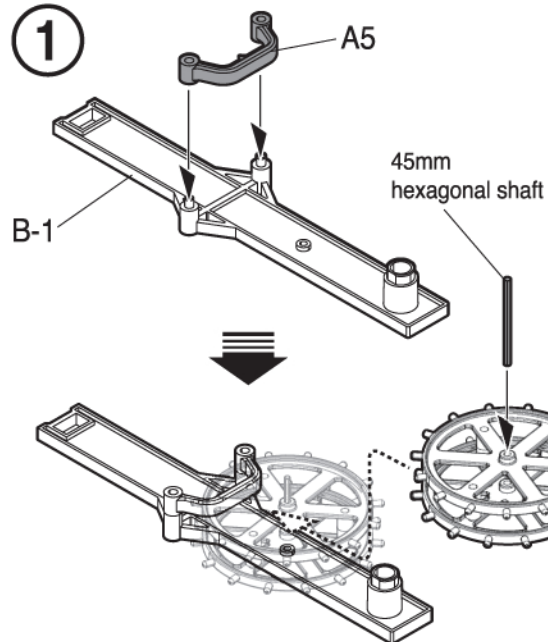
A



C

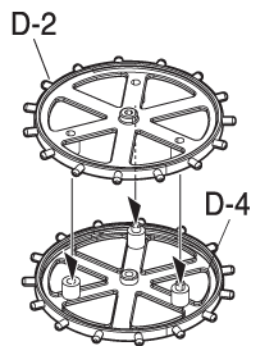


1

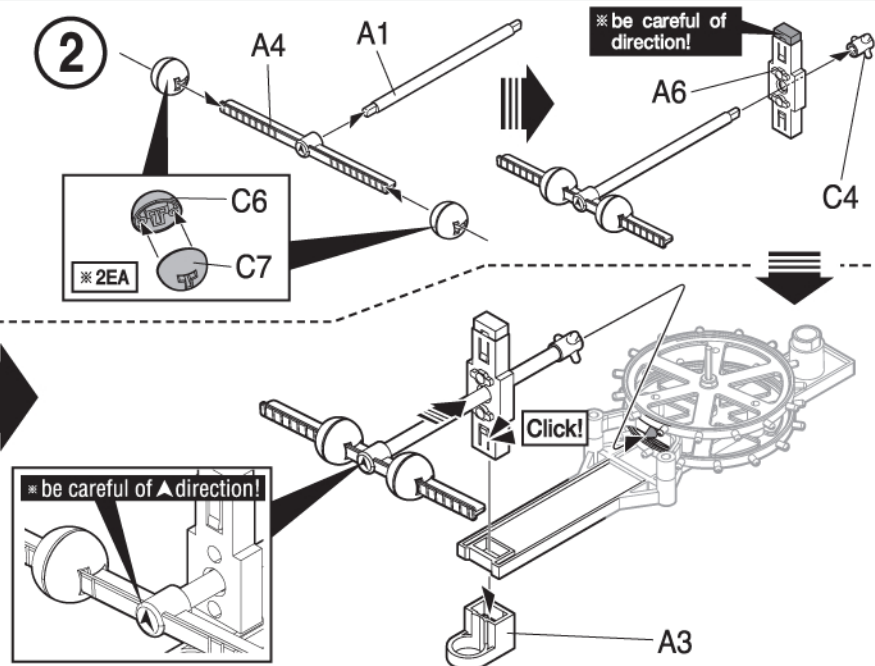


Actual Length

45mm hexagonal shaft x1
34mm hexagonal shaft x1
31mm shaft x2
20mm shaft x1

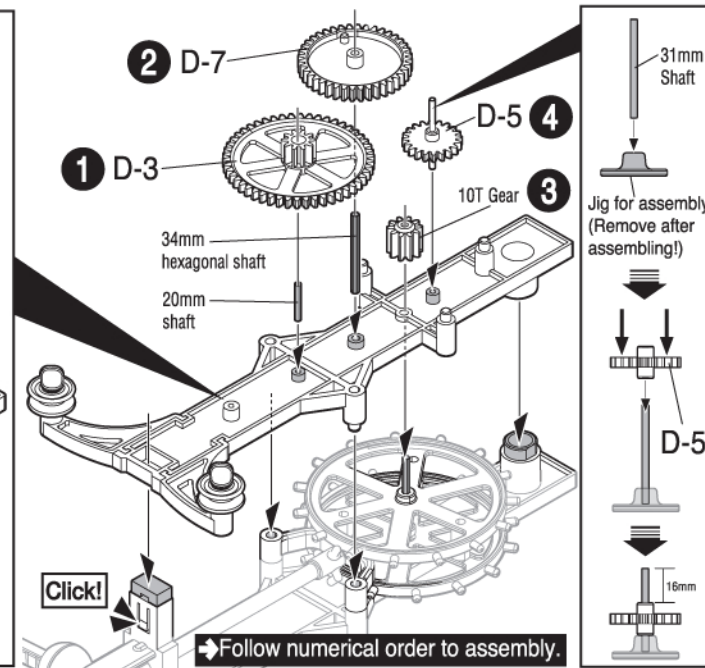
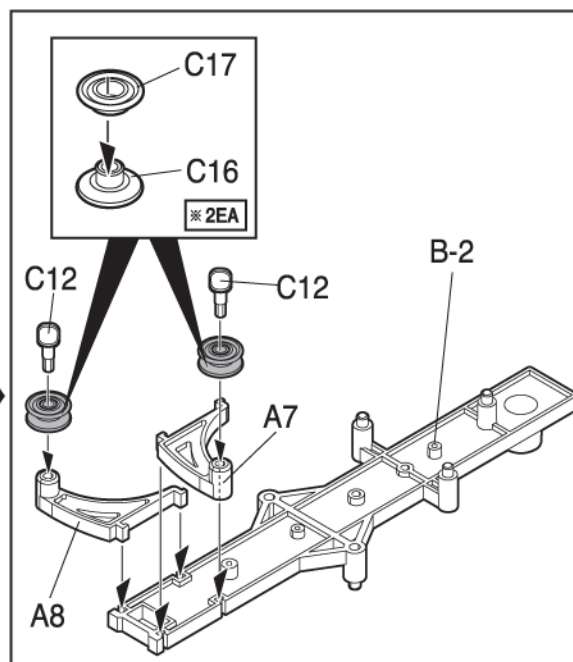
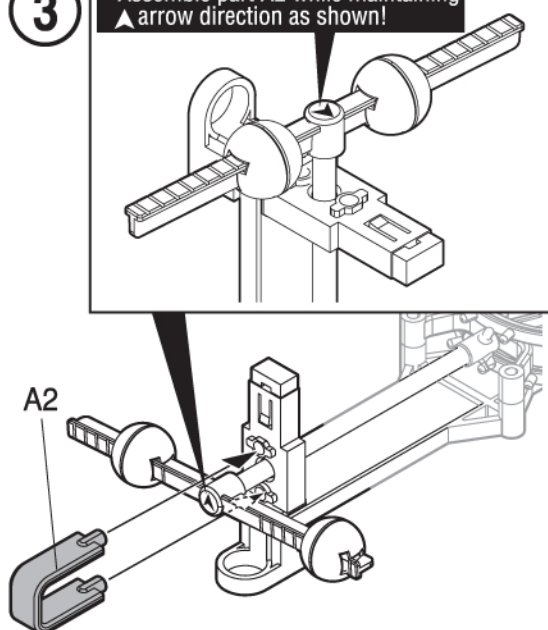


2



3

※ Assemble part A2 while maintaining ▲ arrow direction as shown!



4

-Optional assembly of gear-

D-6 (4:1)

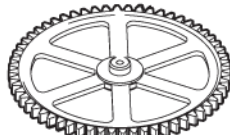


The long hand
1 rotation



A short needle
4 rotations
(About 4 minutes)

D-1 (60:1)

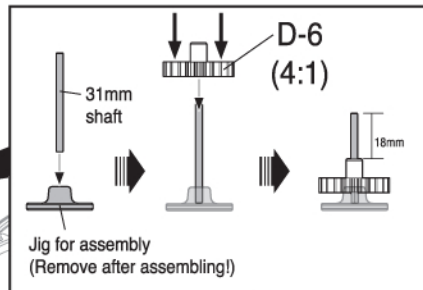
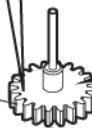


The long hand
1 rotation

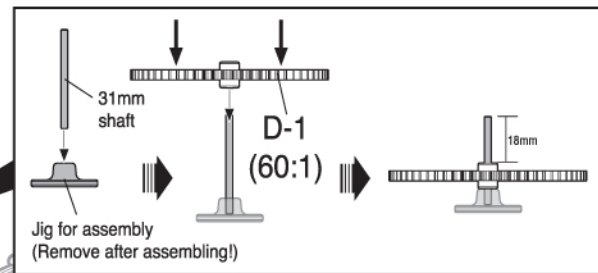
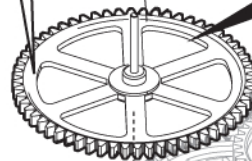


A short needle
60 rotations
(About 60 minutes)

D-6



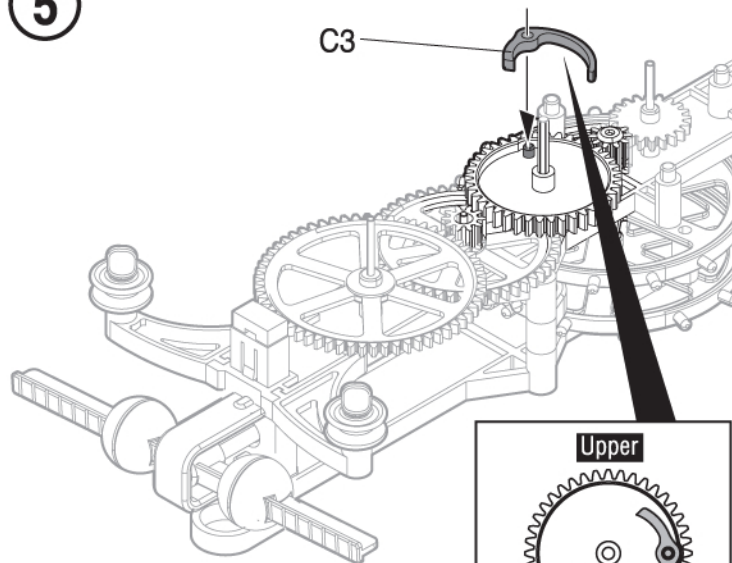
D-1



Optional assembly!

5

C3



Upper

Lower

